



THE Garth

AT REVEILLE



WORSHIP

GROW

SERVE

4200 Cary Street Road
Richmond, Virginia 23221
(804) 359-6041 | www.reveilleumc.org

    @reveilleumc

A GARDEN OF LIFE

Reveille United Methodist Church
4200 Cary Street Road | Richmond, Virginia 23221

THE GARTH AT REVEILLE



“The Lord God planted a garden toward the east, in Eden, and

THE PURPOSES OF THE GARTH

The original blueprints for the construction of Reveille United Methodist Church buildings in 1951 designated the lawn between the sanctuary and educational building bordered by a connecting interior corridor on the east and driveway on the west, as a Garth. ‘Garth’ is an Old English word for “an enclosed yard.”

Access to The Garth Memorial Garden is either through the large wrought iron gate to the west or through double doors to the church building on the east.

The original research and development team, consisting of members of the church along with landscape designers, determined the following purposes and uses for the garden area:

- As a consecrated place for interment of cremains
- As a gathering place for small groups engaged for Bible study
- As a location near the sanctuary for gatherings before and after worship services for informal fellowship
- As an assembly area for outdoor services, including sunrise services, evening worship, weddings, small concerts, formal receptions and community gatherings
- As a protected area for teaching children to appreciate the wonders of nature and an early understanding of Christian burial

THE GARTH ADMINISTRATIVE COMMITTEE

The committee consists of seven to nine members of the congregation along with the associate pastor as ex officio. The group meets three to four times per year and as needed, and is responsible for the maintenance, finances, development, and general care of The Garth, a precious space at the heart of our Christian campus. Please contact the Reveille church office for further information regarding The Garth at Reveille.



“GOD IS THE FIRST, THE BEST, THE ESSENTIAL,
AND THE ETERNAL GARDENER”

NORMAN WIRZBA

CONSTRUCTION PLAN

The renderings shown in this publication were developed by C. Preston Dalrymple and Associates, a Richmond, Virginia, firm of landscape architects and site planners. The Garth research and development team worked closely with Mr. Dalrymple in the drafting and refining of the plans. At the March 1990 meeting of the Reveille Administrative Board, now known as the Church Council, while acting on the recommendations of the Board of Trustees, approval was achieved for the advancement of funds from other financial accounts to allow construction of The Garth to proceed. The project was completed in 1991 and consecrated in 1992. Debt free, The Garth was dedicated in 1994.

FUNDING FOR THE GARTH

Many gifts were given towards the construction of The Garth. At its May 1990 meeting, The Administrative Board accepted the offer of an anonymous donor to honor a Reveille member by contributing \$2 for every \$1 raised by the congregation up to a maximum of \$150,000. The cost for construction of The Garth was \$222,600 and a church-wide fundraising campaign was successfully completed.

The persons who dreamed the original dream for Reveille designated this well-located garden as a cloistered area of beauty and devotion. Today, additional gifts to The Garth Memorial Fund are used to fund annual professional fees needed to maintain The Garth. There are a number of possibilities for continuing contributions to The Garth Memorial Fund:

A Gift of Love for Reveille – These contributions go towards the ongoing maintenance of The Garth as a legacy to those who will be beneficiaries of these hallowed grounds.

A Memoriam or Honorarium – This type of gift is a memorial to a loved one past or in honor of someone who continues to represent the high ideals of the Christian faith.

A Bequest or Will Designation – The lovely lawns, shrubs, and trees in The Garth demand regular attention and care. A designation of The Garth Memorial Fund in a will helps insure that the garden will be properly maintained for years to come.

A GARDEN OF LIFE



there he placed the man whom he had formed.” Genesis 2:8

A GARDEN OF LIFE

The Garth at Reveille was originally viewed by the 1989 research and development committee as a hallowed spot for the interment of cremains. The concept of The Garth as a cloistered garden of tranquility gradually expanded as this committee considered its possibilities

Our belief as Christians in the celebration of eternal life along with the strategic location of The Garth being in the very heart of our church life, both physically and spiritually, gradually led to the view of this area as a ‘Garden of Life’ – a place where the holy sacraments of our faith in conjunction with programs of study, outreach, fellowship, and worship can occur when the weather is conducive to such outdoor activities.

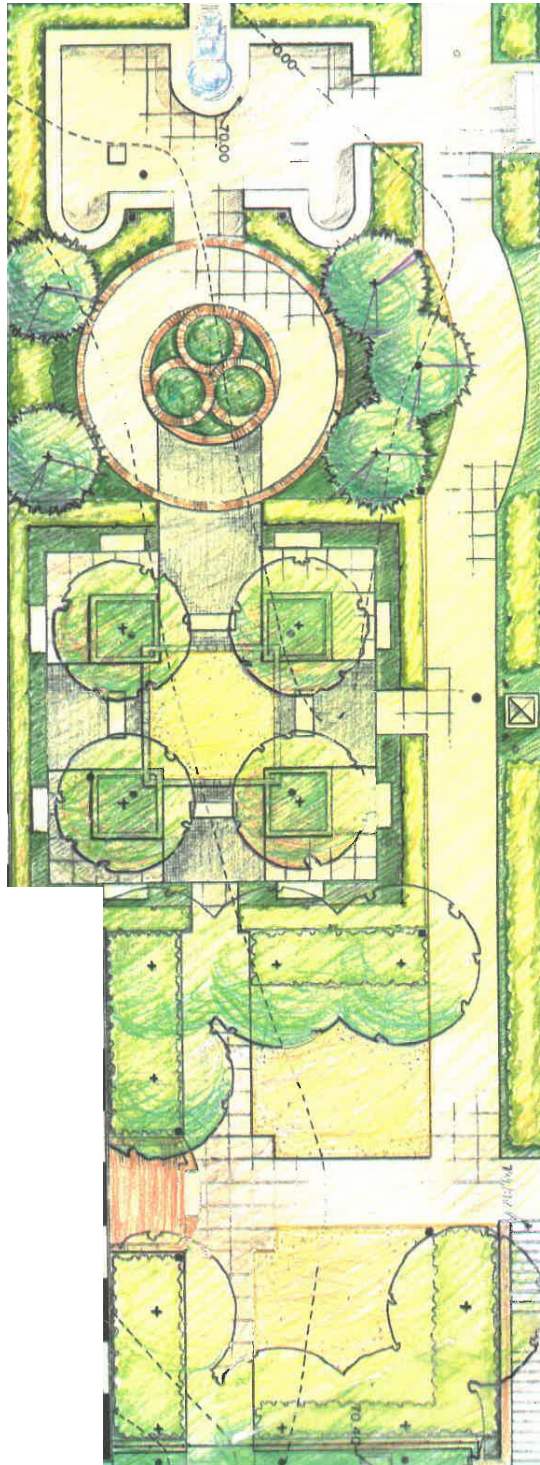
Thus, the original concept of a cloistered garden for burial broadened into that of a living garden designed for many congregational activities, a garden where the symbols of our faith and the beauties of running water and flowering plants form the backdrop for celebrating our life together in Christ.

In 1991, on Reveille’s 40th anniversary, the congregation furthered the dreams of the 1951 congregation by completing the plans for The Garth at Reveille. The Garth was dedicated in 1994.

THE GARDEN OF COVENANT

THE GARDEN OF MEDITATION

THE GARDEN OF CELEBRATION



THE GARDEN OF COVENANT

This is the first of three designated garden areas as viewed from east to west. This space consists of a paved courtyard with a fountain, two stone lecterns and low brick 'knee' walls suitable for seating. This space is designated as a meeting place for small groups of 15-30. It also provides a lovely setting near the sanctuary for refreshments and fellowship before and after worship services as well as for new member and wedding receptions.

THE GARDEN OF MEDITATION

The middle area of The Garth is designed for scattering of the ashes, or remains, of deceased members of the congregation and their families and for the interment of these remains in biodegradable containers. This form of burial is widely accepted. These interments are in consecrated grounds where generations of families will continue to worship and enjoy Christian fellowship. Plantings protect this area from other sections of The Garth. Benches make the area appropriate for undisturbed quiet meditation. Symbols of the cross and the three circles of the Trinity are evident in this section's stonework.

THE GARDEN OF CELEBRATION

This section of The Garth near the wrought iron gates is designed as an outdoor meeting area for larger groups. The area includes a raised dais for worship leaders and performers. The grassed areas can be used for the placement of approximately 70 folding chairs.